



2024





LIFE TASTES BETTER OUTDOORS



2024



Electrolux

BUILT FOR OUTDOOR ENTERTAINING...

BeefEater are proud to manufacture outstanding barbecues and outdoor kitchens to suit all needs. We pride ourselves on great design and quality control which sees every component produced with care and precision.

Being at the forefront of the outdoor cooking market for over 30 years, we understand customers' requirements. We offer a versatile range of stylish freestanding and built-in barbecues along with purpose-built modules and accessories. Our skilled team of designers and engineers have the knowledge and vision to create your perfect outdoor cooking area.

BeefEater Europe are proud to distribute this iconic Australian barbecue brand, which is owned by Electrolux in Sydney. Our products are built to last, constructed from high grade durable materials to withstand harsh weather conditions, and to give you the ultimate outdoor cooking experience.

BARBECUES & FRIDGES	2
RECIPES	56
PRODUCT SPECIFICATIONS	
↳ BUILT-IN BBQ'S	66
↳ FREESTANDING BBQ'S	72
↳ BUILT-IN COMPONENTS & ACCESSORIES	76
↳ COVERS	82
SHOWROOMS	84
BRANDS WE PARTNER WITH	86
↳ CABINEX CLASSIC	88
↳ CABINEX PREMIUM	90
↳ CABINEX PRO	92
BEEFEATER INSTALLATIONS	94
USEFUL NUMBERS & CONTACTS	97

7000 SERIES

BUILT-IN & FREESTANDING SIDE BURNER TROLLEY

THE BBQ OF ALL BBQ'S

Welcome to our new range of built-in and freestanding BBQ's... The large and durable cook-tops are made from porcelain coated cast iron to inhibit rust and ensure you'll be cooking up a feast for years to come. Designed to heat up quickly, the surface is split between grill and solid plate, enabling you to change up your style for different foods. A generous warming rack will give you extra space and improve your overall cooking experience.

BUILT TO LAST

As with all BeefEater Barbecues, the 7000 Series is built to last. Both burner box and roasting hood are made from 304 grade stainless steel, and we use exterior seam welds to ensure grease doesn't leak all over the patio.

DETAILS

Details are laser etched on to the control panel which eliminates fading and chipping of your control knob indicators. Laser etching gives a durable and stylish contrast to the stainless steel.

LED LIGHTING

Now you can cook in the dark with the helpful lighting features. The back hood lights give you great visibility when cooking at night and the LED illuminated control dials show you what power level you are on. This means you can see your food without lifting the hood and thereby maintain that perfect cooking temperature.



7000 series premium LED lighting feature.



7000 series classic built-in barbecue.



7000 series premium built-in barbecue.



The 7000 Premium series BBQ has a built-in 3.1kW rear burner with roasting hood lighting for better viewing and cooking conditions. The classic and premium versions have double layered hoods with large glass viewing window & integrated temperature gauge along with a full width oil & fat catchment tin. Stainless steel firebox with external seam weld for that extra durability.



GRILLS & PLATES

- Porcelain enamelled cast iron hotplate & grills
- Easy to clean
- Great heat retention
- Extremely durable & rust resistant
- Consistent even cooking



FEATURES

- LED lighting on dials & hood (premium only)
- Multifunction cooking / warming rack x2
- Rear burner (premium only)
- Integrated temperature gauge
- Natural gas jets included



DETAILS

- Durable 4.2kW cast stainless steel burners & stainless steel vaporisers (premium only)
- Fully welded 304 grade stainless steel fire box & stainless steel elevated cooking rack
- Quartz start ignition



7000 premium series 5 burner free-standing side burner trolley.



Large viewing window and integrated temperature gauge.

7000 premium or 7000 classic BBQ 5 burner with a premium trolley.



ICEBOX & CHOPPING BOARD

- Icebox concealed to keep your drinks chilled
- Prepare your food with ease
- Removable & easy to clean
- Soft closing lids
- Extra space to work with

ACCESSORY RAIL

- Both sides of the trolley
- Organise all accessories to customize your cooking area
- Easy to reach to help with all your cooking needs
- Perfect for cooking multiple foods

SIDE BURNER

- Cast iron trivet
- Brass burner cap disperses flame
- Cast stainless steel body
- Quartz start ignition on all burners
- Lid folds down for use as a table





1200 SERIES

BUILT-IN & FREESTANDING SIDE BURNER TROLLEY

BUILT TO LAST

Thick gauge porcelain enamelled steel burner box which is entirely enclosed and seam welded to ensure a consistent chamber performance, even in windy conditions, and prevent grease leaks on your patio.

SIDE BURNER SHELF

Cook delicious stir fries with a powerful built-in wok burner which also doubles up as a side shelf when not in use.

GRILL & GRIDDLE

Cast iron cook tops with versatile grill and griddle options.

FULL CONTROL

4 heavy duty lockable swivel castors for easy mobility.

TASTE THE POWER

Seal in the flavour with our durable and powerful 4kW cast iron rail burners.

SNUG FIT

A roll-back hood that allows the BBQ to sit snugly against the wall.





1200 series available in an enamel or stainless steel finish.



Flavourful food without the fuss. Cook more delicious food on the spacious cast iron cook top that will heat evenly and retain temperature for better cooking results.

The cook top is porcelain coated which offers protection from rust and ensures it will last longer. The integrated warming rack designed to keep your food warm until you are ready for it can easily be moved out of the way when you don't need it.

Cleaning made easy. The grease management system ensures oil and residues are either vaporized or channelled down to the easily removable drip tray.

Check your food whilst retaining the heat with the large viewing window, which makes cooking on a BBQ so much easier. Keep all the flavour sealed in so everything simply tastes better.





GRILLS & PLATES

- Porcelain enamelled cast iron hotplate & grills
- Easy to clean
- Great heat retention
- Extremely durable & rust resistant
- Consistent even cooking



FEATURES

- Front access full width drip tray
- Raised edge around the hotplate which means no overflow
- Removable multifunction cooking / warming rack
- Integrated temperature gauge



SIDE BURNER

- Cast iron trivet
- Brass burner cap disperses flame
- Enamelled / stainless steel body
- Quartz start ignition
- Lid folds down for use as a table

1500 SERIES

BUILT-IN & FREESTANDING SIDE BURNER TROLLEY

STYLISH CONTROL PANEL

Close the control cover panel for a seamless look when the BBQ is not in use and then flip it down for a handy little shelf when you're cooking.

FULL CONTROL

4 heavy duty lockable swivel castors for easy mobility.

TIDY STORAGE

Full capacity storage cabinet to keep essentials tidy.

SNUG FIT

A roll-back hood that allows the BBQ to sit snugly against the wall.

TASTE THE POWER

Seal in the flavour with our durable and powerful 4kW cast iron rail burners.

DETAILS

Cover panel created to look like wood, making it perfect for fitting in with a variety of different surroundings.





Control dials hidden behind the sleek and stylish cover panel.



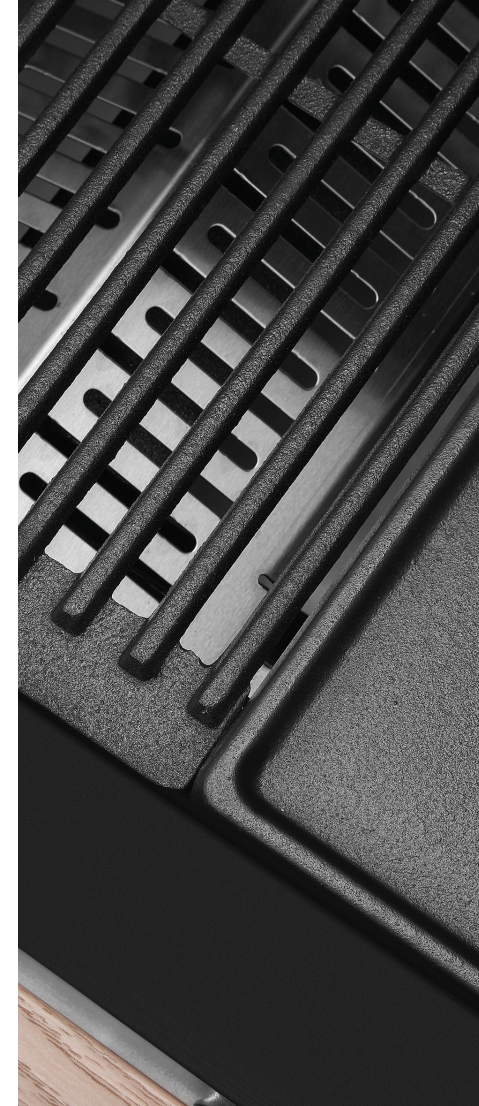
Making cooking easy and quick with the quartz start ignition, first time every time. The easy start ignition system makes sparking up the BBQ a breeze.

Creating that perfect roast is easy with our double layered hood and integrated temperature gauge. Sear your cut of meat on the cast iron plate and then set your chamber temperature for outstanding flavour every time.

The spacious cast iron cook top ensures quality cooking performance. A protective enamel coating makes them durable and easy to clean.

As well as this being a great barbecue, the 1500 series also features a stylish control panel cover which folds down for use as a handy shelf when you are cooking.





GRILLS & PLATES

- Porcelain enamelled cast iron hotplate and grills
- Easy to clean
- Great heat retention
- Extremely durable & rust resistant
- Consistent even cooking

FEATURES

- Drop down wood effect shelf
- Hotplate doubles up as a flat plate or griddle plate
- Elevated multifunction cooking / warming rack
- Integrated temperature gauge

SIDE BURNER

- Cast iron trivet
- Brass burner cap disperses flame
- Stainless steel body
- Quartz start ignition on all burners
- Lid folds down for use as a table





1600 SERIES

BUILT-IN & FREESTANDING SIDE BURNER TROLLEY

KEEP ALL THE FLAVOUR SEALED IN

Seal in the flavour with powerful cast iron burners, cook with consistent heat to give you the delicious results you're looking for.

SIDE BURNER SHELF

Cook tasty stir fries with the powerful built-in wok burner.

GRILL & GRIDDLE

Cast iron cook tops with a versatile grill and griddle options.

CLASS LEADING

Double skin stainless steel roasting hood with integrated temperature gauge for top class indirect cooking.

SEE FOR YOURSELF

Extra-large viewing window lets you see what's going on under the roasting hood.

SPACIOUS

Large cooking area, side shelves and trolley cupboards for storing and preparing everything you need for your perfect barbecue experience.





1600 series available in a graphite or stainless steel finish.



With cast iron burners and stainless steel vaporisers, you have one of the most durable, flexible, and efficient cooking systems available. The cast iron heats up quickly and maintains a consistent temperature. The stainless steel vaporisers very efficiently disperse the flames across the grill and plate surfaces whilst reducing flare ups.

The large viewing window means you can keep a careful eye on your food without lifting the hood and losing that all important oven chamber temperature. There is a chrome wired elevated cooking rack that keeps your food warm when it's done or you can use it as a second cooking area.

Control each burner with a separate knob, allowing you to be in full control of the heat. Turn the hotplate burners up for searing and the grill burners down for that slow cook.

Raised edges on the hotplate prevents grease or oil spilling over and the grease management system ensures they are either vaporized or channelled down to the easily removable drip tray.





GRILLS & PLATES

- Porcelain enamelled cast iron hotplate and grills
- Easy to clean
- Great heat retention
- Extremely durable & rust resistant
- Consistent even cooking

FEATURES

- Double layer roll-back hood with large glass viewing window
- Integrated temperature gauge
- Easy read control knob & bezels
- Fully seam welded vitreous fire box
- Multifunctional cooking / warming rack

SIDE BURNER

- Cast iron trivet
- Brass burner cap disperses flame
- Graphite / Stainless steel finishes
- Quartz start ignition
- Lid folds down for use as a table



3000E SERIES

BUILT-IN

PACKED WITH FEATURES

Crafted from black enamelled steel for maximum style and durability. Stainless steel vaporisers and heat reflectors to promote power and control the flame for maximum flavour.

EVEN HEAT DISTRIBUTION

Cast iron burners with 72 apertures per burner for maximum heat. There are stainless steel reflectors that sit between and underneath the burners. Along with that the stainless steel vaporisers prevent direct flame contact with the cooking surface.

DURABILITY

Heavy duty cast iron cook tops with our unique V-shaped channels on the grill and cambered plate.

DETAILS

Integrated convection roasting hood with a large removable warming rack. The hood also features a durable BeefEater badge and an integral temperature gauge.

SNUG FIT

A roll-back hood that allows the BBQ to sit snugly against the wall.

DESIGN

Beautifully crafted to suit all needs, stylish and built to last, the 3000E is a classic all round fantastic BBQ.



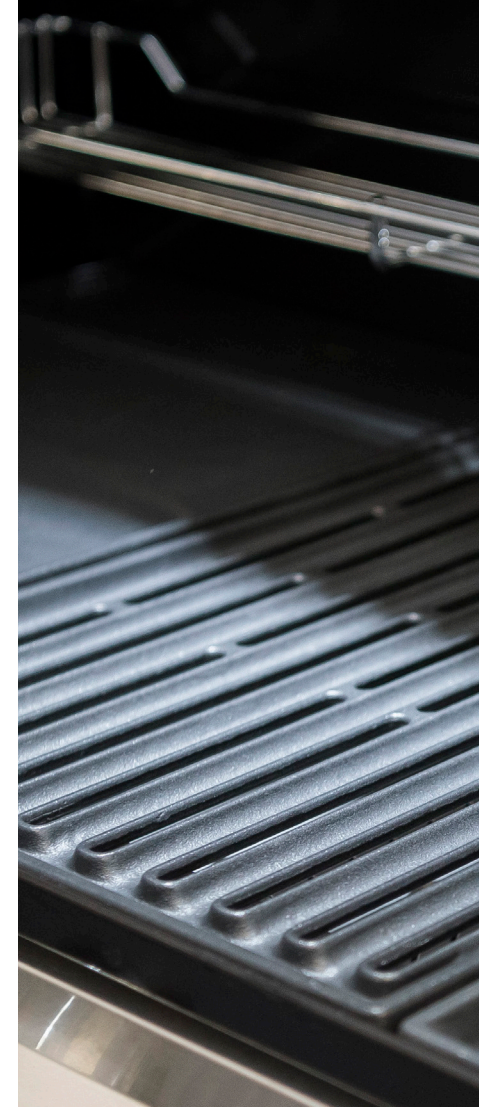
3000E 4 burner built-in barbecue and the FrescoPro Augusta outdoor kitchen.



With an integrated easy clean convection roasting hood, you can now experience cooking to perfection in easy clean vitreous enamel. The roasting hood also includes an on-board warming rack and temperature gauge. The cook top is created from porcelain enamel coated cast-iron which makes it very durable and rust resistant. This is one of the toughest coatings available and the cook top is built to last.

The vaporiser grid reflector system with anti-flare technology reduces unwanted flare-ups and heat loss for faster cooking and superior fuel economy. Along with that, our innovative integrated quartz start ignition is a titanium-coated system that ensures durable and hassle-free starting. Fires up the first time, every time.





GRILLS & PLATES

- Porcelain enamelled cast iron hotplate and grills
- Easy to clean
- Great heat retention
- Extremely durable & rust resistant
- Consistent even cooking



FEATURES

- Large viewing window to assist when indirect cooking
- Stainless steel drip tray for longevity in grease management
- Multifunction cooking / warming rack, raised and hood hinged



DETAILS

- Integrated temperature gauge
- Hard wearing BeefEater badge
- Black enamel body
- Quartz start ignition on all burners
- Seam welded burner box



PROLINE® SERIES

BUILT-IN

OUTDOOR ENTERTAINING NEVER LOOKED SO GOOD

With a sleek linear design and uncompromising power, our ProLine® series integrated barbecues offer an array of premium features such as multi-purpose cast iron furnishings, a powerful quad burner, and a superior oil management system.

It's everything you want in a barbecue and more.

DESIGNED TO LAST

The ProLine® is built for style and durability with the six 304 grade stainless steel tubular burners, with a total rating of 18.6kW. The heavy duty cast iron cook tops combine with stainless steel vaporisers and an electronic ignition to provide superior cooking performance. Available with either a flat lid or a roasting hood option.

The roasting hood model features flame failure safety technology.

STYLE DETAILS

Intuitive side mounted controls with laser etched power level indicators.

ACCESSORIES

Optional barbecue extras available for both models to broaden your cooking experience so you can cook a variety of foods to please all your guests or simply a perfect feast for the family.





FLAT LID



ROASTING HOOD



ROASTING HOOD WARMING RACK



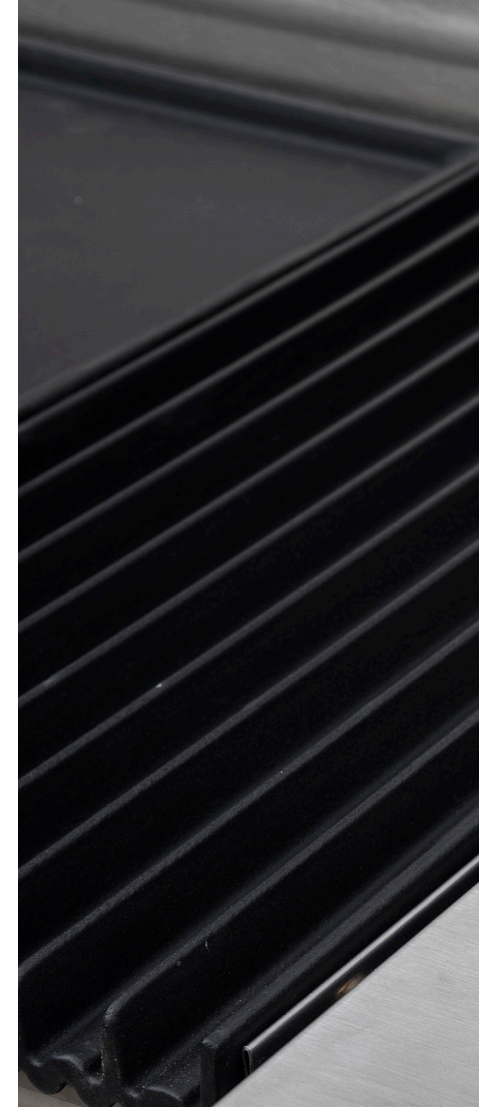
With its distinctive linear design, the BeefEater ProLine® barbecue range is sure to impress. Sleek lines, cutting-edge style and a top-class range of innovative features have created the perfect addition to your outdoor entertaining area.

The cast hotplate is designed to fit over the four centre burners of the barbecue, this clever cast iron hotplate will have you cooking like a pro. With one control igniting two burners at a time, simply select your desired heat level and enjoy the ideal set-up for consistently even grilling, searing, or roasting.

With the superior oil management system, it is a healthier cooking and an easy-to-clean barbecue. Oil and waste run into easily removable containers at the front of the barbecue, while the unique angled surface drains oil away from food.



ProLine® roasting hood integrated temperature gauge.



GRILLS & PLATES

- Porcelain enamelled cast iron hotplate and grills
- Easy to clean
- Great heat retention
- Extremely durable & rust resistant
- Consistent even cooking



FEATURES

- Laser etched badge and controls
- Intuitive side mounted controls
- Multifunction cooking/ warming rack (Roasting hood only)
- 304 stainless steel tubular burners x6
- Flame failure on roaster models



SIDE BURNER

- Powerful Quad Burner™
- Made for durability & style
- Electronic ignition on all burners
- Optional barbecue extras available



CLUBMAN SERIES

FREESTANDING

FREEDOM OF COOKING ANYWHERE

Whether you're hosting a big family event or entertaining friends at the local park, enjoy the freedom of cooking anywhere outdoors with the BeefEater Clubman.

Designed for mobility and durability, its convenient folding legs and huge cooking area make it ideal for any occasion. Perfect for families, schools and sporting clubs, the BeefEater Clubman can handle anything you can throw at it, or on it. Choose from stainless steel or black mild steel finish.

Bringing people together.... With the clubman you can enjoy the freedom of cooking from anywhere outdoors with the easy access removable plate, front grease cup and weatherproof lid.



COOKING AREA

- Large 5mm thick cooking plate
- 304 grade stainless steel or food safe painted mild steel
- Great heat retention
- Extremely durable & rust resistant
- Consistent even cooking

FEATURES

- Folding legs & side shelf for easy transportation
- Includes rain lid and handle
- 4 heavy duty lockable swivel castors for easy mobility
- Powerful burners which heat the plate quick and evenly

CONTROL

- Innovative titanium coated system
- Made for durability & hassle free
- Quartz start ignition system
- Heavy duty componentry
- Easy to control heat and power

FRIDGES

BUILT-IN

POWER & PRECISION

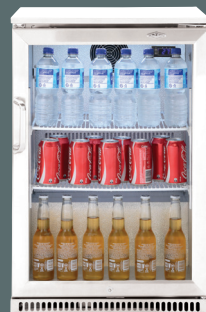
The BeefEater range of outdoor bar fridges have the power to keep your drinks perfectly chilled on even the hottest days.

Designed for outdoor use, the BeefEater fridge has been tested to 43°C in the shade and has a 304 grade stainless steel finish, making it ideal for use even in a harsh climate.

The insulated and heated double glazed glass doors allow you to see all your drinks at a glance and prevents condensation for even better visibility.

IPX4 rated – the cabinet is protected against splashes of water for at least 5 minutes, making it perfect for use within a built-in outdoor kitchen.

The electronic controls allow you to set the temperature for your cabinet at the touch of a button, with a temperature range of 0°C - 10°C.



120L SINGLE DOOR OUTDOOR BAR FRIDGE
W 555 x D 495 x H 850 mm

28131 UK Plug

28132 EU Plug



190L DOUBLE DOOR OUTDOOR BAR FRIDGE
W 865 x D 495 x H 850 mm

28201 UK Plug

28202 EU Plug



WHOLE BBQ SNAPPER

with a Mediterranean Marinade

Serves 2

Ingredients / Main dish

- 2kg whole snapper – De scaled & fins removed

Marinade

- ½ tomato, diced
- 3 lemons, 2 zested and 1 cut into wedges
- 50g capers
- 2 cloves garlic, chopped
- 1 teaspoon of cumin
- 1 teaspoon of paprika
- ½ cup parsley, roughly chopped
- ½ onion, diced
- 50ml olive oil
- Salt and pepper

Method

1. Light BeefEater® BBQ to high with the hood down (x2 burners maximum).
2. In a bowl combine all marinating ingredients and season to taste.
3. Score fish in 3 incisions along fillet half ways through to spine each side.
4. Season fish on all sides with salt and pepper and add marinade to the incisions and centre of the fish along with slices of lemon wedges.
5. Place fish into a suitable fish cage or into a baking tray and pour over excess marinade (tray version is fine covered with foil).
6. Turn centre BBQ burners off leaving 2 outside burners on only (Indirect cooking).
7. Place fish in centre of BBQ and close the hood. Cook fish for 25 minutes per kilogram or approximately 50 minutes (BBQ will cook fish best when preheated to 200°C). Blend ingredients for the pesto.
8. Fish will be tender to touch. Eyes will be a pearl white when ready.
9. Pour juice from tray over the fish just before serving, add the pesto and enjoy!

Pistachio Pesto

- 3 cups lightly-packed fresh basil leaves
- ½ cup freshly grated parmesan
- ⅓ cup shelled pistachios
- 3 cloves garlic
- 1 teaspoon sea salt
- ½ teaspoon freshly-cracked black pepper
- ½ cup extra-virgin olive oil



ZESTY ROSEMARY LAMB CUTLETS

Serves 4

Ingredients

- 3 tablespoons of finely chopped rosemary (or thyme) leaves
- 2 tablespoons of garlic powder
- Zest of 1 orange
- Zest of 1 lemon
- 1 tablespoon of salt
- 1 tablespoon of ground black pepper
- 8 Lamb cutlets

Method

1. Mix all ingredients together (except the lamb) to create a marinade rub.
2. Massage rub into the meat and let it stand for 10-20 minutes.
3. Preheat BeefEater® BBQ and cook meat on medium heat until it is cooked to your liking (approx. 3 mins on each side for medium rare).
4. Rest meat for 5-10 minutes before serving.
5. Serve with your favourite sides and enjoy!



JAMAICAN JERK BBQ CHICKEN

Serves 4

Ingredients

- 5 spring whole onions, roots cut off
- 3 garlic cloves, peeled
- 1 tablespoon of grated ginger
- 1 chilli
- 1 tablespoon of pimento seeds
- ½ tablespoon of cinnamon
- ½ tablespoon of pepper corns (black)
- ½ tablespoon of coriander seeds
- ½ teaspoon of ground nutmeg
- 2 bay leaves
- Leafs of 3 sprigs of thyme
- 100ml olive oil
- Juice of ½ lemon
- Salt
- 1.5kg chicken pieces

Method

1. To make each paste place all ingredients (except chicken) into a food processor or mortar and process into a paste.
2. Brush paste over chicken.
3. Marinate the chicken overnight for a better result, otherwise cook straight away.
4. Place the chicken onto the preheated BeefEater® BBQ (medium heat). Close with the hood and cook for 30-40 minutes, turning regularly.
5. The chicken is cooked when it reaches 75 degrees (check the thickest part of breast or the thighs), or check it by poking a knife tip into the thickest part:
 - * If cloudy pinkish juice oozes out, it is undercooked
 - * If clear juice quickly oozes out, it is just about to be ready
 - * If juices starts to ooze out slowly the chicken is perfectly cooked
 - * If no juice comes out it is overcooked
6. Any left-over paste bring to the boil to kill harmful food bacteria.
7. To do it you place the tray with the juices onto the BBQ and bring to the boil and pour over the chicken just before serving.



CHOC & MACADAMIA NUT BROWNIES

with vanilla ice cream, melted chocolate and strawberries

Serves 6

Ingredients

- 125g unsalted butter
- 100g dark chocolate
- 220g caster sugar
- ½ cup (125ml) hot water
- 3 teaspoons espresso coffee
- 40g coco powder
- 45g plain flour and 85g self raising flour
- 100g macadamia nuts, crushed
- 1 egg, lightly beaten

Method

1. Heat BeefEater® BBQ to 150°C.
2. Combine butter, chocolate, sugar, coffee, hot water in heatproof bowl.
3. Place bowl over saucepan of simmering water and stir until sugar dissolves.
4. Remove bowl from pan and stir through cocoa, both flours and macadamia nuts.
5. Whisk to smooth mixture.
6. Allow mixture to cool slightly then stir through egg.
7. Line a baking tray with Teflon Liner and pour brownie mixture in.
8. Bake with lid closed on BeefEater® BBQ for approximately 25 minutes or until a skewer inserted into brownies comes out clean.
9. Once cool, cut and serve with fresh strawberries, melted chocolate and vanilla ice cream.





PRODUCT SPECIFICATIONS



1200S Series 3 Burner

Stainless Steel Built-in BBQ

BBG1230SBE

Cast Iron cook pack BBG1230SBE		NG Kit 95176	Rotisserie SP-638-BE		Cover 94493	Built-In Kit BA12HS	
Cook Area 3072cm sq	Grill 320mm	Plate 320mm	Height 499mm	Width 687mm	Depth 568mm	Weight 43kg*	MJ/hr 43



1200S Series 4 Burner

Stainless Steel Built-in BBQ

BBG1240SBE

Cast Iron cook pack BBG1240SBE		NG Kit 95176	Rotisserie SP-638-BE		Cover 94494	Built-In Kit BA12HS	
Cook Area 3840cm sq	Grill 400mm	Plate 400mm	Height 499mm	Width 837mm	Depth 568mm	Weight 51kg*	MJ/hr 58



1200S Series 5 Burner

Stainless Steel Built-in BBQ

BBG1250SBE

Cast Iron cook pack BBG1250SBE		NG Kit 95176	Rotisserie SP-638-BE		Cover 94495	Built-In Kit BA12HS	
Cook Area 4608cm sq	Grill 640mm	Plate 320mm	Height 499mm	Width 1007mm	Depth 568mm	Weight 58kg*	MJ/hr 72



1200E Series 3 Burner

Black Enamel Built-in BBQ

BBG1230BBE

Cast Iron cook pack BBG1230BBE		NG Kit 95176	Rotisserie SP-638-BE		Cover 94493	Built-In Kit BA12HS	
Cook Area 3072cm sq	Grill 320mm	Plate 320mm	Height 499mm	Width 687mm	Depth 568mm	Weight 43kg*	MJ/hr 43



1200E Series 4 Burner

Black Enamel Built-in BBQ

BBG1240BBE

Cast Iron cook pack BBG1240BBE		NG Kit 95176	Rotisserie SP-638-BE		Cover 94494	Built-In Kit BA12HS	
Cook Area 3840cm sq	Grill 400mm	Plate 400mm	Height 499mm	Width 837mm	Depth 568mm	Weight 51kg*	MJ/hr 58



1200E Series 5 Burner

Black Enamel Built-in BBQ

BBG1250BBE

Cast Iron cook pack BBG1250BBE		NG Kit 95176	Rotisserie SP-638-BE		Cover 94495	Built-In Kit BA12HS	
Cook Area 4608cm sq	Grill 640mm	Plate 320mm	Height 499mm	Width 1007mm	Depth 568mm	Weight 58kg*	MJ/hr 72



1500 Series 3 Burner

Stainless Steel Built-in BBQ

BDB1530GA

Cast Iron cook pack BDB1530GA		NG Kit 95176	Cover BACB153		Built-in Bracket BA70HS		
Cook Area 3072cm sq	Grill 320mm	Plate 320mm	Height 474mm	Width 654mm	Depth 584mm	Weight 43kg*	MJ/hr 43



1500 Series 4 Burner

Stainless Steel Built-in BBQ

BDB1540GA

Cast Iron cook pack BDB1540GA		NG Kit 95176	Cover BACB154		Built-in Bracket BA70HS		
Cook Area 3840cm sq	Grill 400mm	Plate 400mm	Height 474mm	Width 804mm	Depth 584mm	Weight 51kg*	MJ/hr 58



1500 Series 5 Burner

Stainless Steel Built-in BBQ

BDB1550GA

Cast Iron cook pack BDB1550GA		NG Kit 95176	Cover BACB155		Built-in Bracket BA70HS		
Cook Area 4608cm sq	Grill 640mm	Plate 320mm	Height 474mm	Width 974mm	Depth 584mm	Weight 58kg*	MJ/hr 72



1500 Control Panel



1500 Integrated Temperature Gauge



1500 Grill and Vaporiser

*Approximate weight



1600S Series 3 Burner

Stainless Steel Built-in BBQ

BBG1630SAE

Cast Iron cook pack		NG Kit		Rotisserie		Cover		Built-In Kit
BBG1630SAE		95176		SP-638-BE		BACB153		BA70HS
Cook Area	Grill	Plate	Height	Width	Depth	Weight	MJ/hr	
3072cm sq	320mm	320mm	517mm	698mm	555mm	43kg*	43	



1600S Series 4 Burner

Stainless Steel Built-in BBQ

BBG1640SAE

Cast Iron cook pack		NG Kit		Rotisserie		Cover		Built-In Kit
BBG1640SAE		95176		SP-638-BE		BACB154		BA70HS
Cook Area	Grill	Plate	Height	Width	Depth	Weight	MJ/hr	
3840cm sq	400mm	400mm	517mm	804mm	555mm	51kg*	58	



1600S Series 5 Burner

Stainless Steel Built-in BBQ

BBG1650SAE

Cast Iron cook pack		NG Kit		Rotisserie		Cover		Built-In Kit
BBG1650SAE		95176		SP-638-BE		BACB155		BA70HS
Cook Area	Grill	Plate	Height	Width	Depth	Weight	MJ/hr	
4608cm sq	640mm	320mm	517mm	975mm	555mm	58kg*	72	



1600E Series 3 Burner

Graphite Stainless Steel Built-in BBQ

BBG1630DAE

Cast Iron cook pack		NG Kit		Rotisserie		Cover		Built-In Kit
BBG1630DAE		95176		SP-638-BE		BACB153		BA70HS
Cook Area	Grill	Plate	Height	Width	Depth	Weight	MJ/hr	
3072cm sq	320mm	320mm	517mm	698mm	555mm	43kg*	43	



1600E Series 4 Burner

Graphite Stainless Steel Built-in BBQ

BBG1640DAE

Cast Iron cook pack		NG Kit		Rotisserie		Cover		Built-In Kit
BBG1640DAE		95176		SP-638-BE		BACB154		BA70HS
Cook Area	Grill	Plate	Height	Width	Depth	Weight	MJ/hr	
3840cm sq	400mm	400mm	517mm	804mm	555mm	51kg*	58	



1600E Series 5 Burner

Graphite Stainless Steel Built-in BBQ

BBG1650DAE

Cast Iron cook pack		NG Kit		Rotisserie		Cover		Built-In Kit
BBG1650DAE		95176		SP-638-BE		BACB155		BA70HS
Cook Area	Grill	Plate	Height	Width	Depth	Weight	MJ/hr	
4608cm sq	640mm	320mm	517mm	975mm	555mm	58kg*	72	



S3000E Series 3 Burner

Black Enamel Built-in BBQ

19932

Cast Iron cook pack		NG Kit		Rotisserie		Cover		Built-In Kit
19932		95174		SP-638-BE		94493		23133
Cook Area	Grill	Plate	Height	Width	Depth	Weight	MJ/hr	
3072cm sq	320mm	320mm	525mm	660mm	570mm	55kg*	57	



S3000E Series 4 Burner

Black Enamel Built-in BBQ

19942

Cast Iron cook pack		NG Kit		Rotisserie		Cover		Built-In Kit
19942		95174		SP-638-BE		94494		23134
Cook Area	Grill	Plate	Height	Width	Depth	Weight	MJ/hr	
3840cm sq	400mm	400mm	525mm	816mm	570mm	65kg*	76	



S3000E Series 5 Burner

Black Enamel Built-in BBQ

19952

Cast Iron cook pack		NG Kit		Rotisserie		Cover		Built-In Kit
19952		95174		SP-638-BE		94495		23135
Cook Area	Grill	Plate	Height	Width	Depth	Weight	MJ/hr	
4608cm sq	640mm	320mm	525mm	973mm	570mm	68kg*	95	



S3000E Plate and Grill



S3000E Cooking/ Warming Rack



S3000E Integrated Temperature Gauge

*Approximate weight



7000 Series Classic 4 Burner

Stainless Steel Built-in BBQ

BBG7640SAE

Cast Iron cook pack BBG7640SAE		NG Kit 95182	Rotisserie SP-638-BE		Cover BACB704	Built-In Kit BA55HS	
Cook Area 3740cm sq	Grill 195mm x2	Plate 380mm	Height 555mm	Width 817mm	Depth 628mm	Weight 65kg*	MJ/hr 68



7000 Series Classic 5 Burner

Stainless Steel Built-in BBQ

BBG7650SAE

Cast Iron cook pack BBG7650SAE		NG Kit 95182	Rotisserie SP-638-BE		Cover BACB705	Built-In Kit BA55HS	
Cook Area 4480cm sq	Grill 270mm x2	Plate 380mm	Height 555mm	Width 973mm	Depth 628mm	Weight 68kg*	MJ/hr 85



7000 Series Premium 4 Burner

Stainless Steel Built-in BBQ

BBF7645SAE

Cast Iron cook pack BBF7645SAE		NG Kit 95182	Rotisserie SP-638-BE		Cover BACB704	Built-In Kit BA55HS	
Cook Area 3740cm sq	Grill 195mm x2	Plate 380mm	Height 555mm	Width 817mm	Depth 628mm	Weight 65kg*	MJ/hr 85



7000 Series Premium 5 Burner

Stainless Steel Built-in BBQ

BBF7655SAE

Cast Iron cook pack BBF7655SAE		NG Kit 95182	Rotisserie SP-638-BE		Cover BACB705	Built-In Kit BA55HS	
Cook Area 4480cm sq	Grill 270mm x2	Plate 380mm	Height 555mm	Width 973mm	Depth 628mm	Weight 68kg*	MJ/hr 105



7000 Premium Control Dial Lighting



7000 Viewing Window



7000 Vaporiser



ProLine® 6 Burner with Roasting Hood

Stainless Steel Built-in BBQ with Anti-Flare Technology

BSH158SAEUGB

Cast Iron cook pack BSH158SAEUGB		Griller Pack BACS102A	Cover BACS200A		Built-In Kit BACS100A		
Cook Area 4176cm sq	Grill 430mm	Plate 430mm	Height 212mm	Width 1053mm	Depth 540mm	Weight 63.5kg*	MJ/hr 71



ProLine® 6 Burner with Removable Flat lid

Stainless Steel Built-in BBQ with Anti-Flare Technology

BSL158SAEUGB

Cast Iron cook pack BSL158SAEUGB		Griller Pack BACS102A	Cover BACS201A		Built-In Kit BACS100A		
Cook Area 4176cm sq	Grill 430mm	Plate 430mm	Height 42mm	Width 1053mm	Depth 540mm	Weight 54.5kg*	MJ/hr 71



ProLine® Quad Burner with Removable Flat lid

Stainless Steel Built-in Side Burner

BSW318SAEUGB

Cast Iron cook pack BSW318SAEUGB		Griller Pack ACC178	Cover BACS202A	Built-In Kit BACS101A	
Height 42mm	Width 350mm	Depth 540mm	Weight 18kg*	MJ/hr 23	



ProLine® Cooking/ Warming Rack



ProLine® Lasered Badge & Details



ProLine® Roasting Hood

*Approximate weight



1200S Series 3 Burner

Stainless Steel Freestanding BBQ with Side Burner Trolley

BMG1231SBE

Cast Iron cook pack		NG Kit	Rotisserie		Cover		
BMG1231SBE		95176	SP-638-BE		94463		
Cook Area	Grill	Plate	Height	Width	Depth	Weight	MJ/hr
3072cm sq	320mm	320mm	1217mm	1377mm	602mm	63kg*	58



1200S Series 4 Burner

Stainless Steel Freestanding BBQ with Side Burner Trolley

BMG1241SBE

Cast Iron cook pack		NG Kit	Rotisserie		Cover		
BMG1241SBE		95176	SP-638-BE		94464		
Cook Area	Grill	Plate	Height	Width	Depth	Weight	MJ/hr
3840cm sq	400mm	400mm	1217mm	1527mm	602mm	77kg*	72



1200S Series 5 Burner

Stainless Steel Freestanding BBQ with Side Burner Trolley

BMG1251SBE

Cast Iron cook pack		NG Kit	Rotisserie		Cover		
BMG1251SBE		95176	SP-638-BE		94465		
Cook Area	Grill	Plate	Height	Width	Depth	Weight	MJ/hr
4608cm sq	640mm	320mm	1217mm	1697mm	602mm	91kg*	86



1200E Series 3 Burner

Black Enamel Freestanding BBQ with Side Burner Trolley

BMG1231BBE

Cast Iron cook pack		NG Kit	Rotisserie		Cover		
BMG1231BBE		95176	SP-638-BE		94463		
Cook Area	Grill	Plate	Height	Width	Depth	Weight	MJ/hr
3072cm sq	320mm	320mm	1217mm	1377mm	602mm	63kg*	58



1200E Series 4 Burner

Black Enamel Freestanding BBQ with Side Burner Trolley

BMG1241BBE

Cast Iron cook pack		NG Kit	Rotisserie		Cover		
BMG1241BBE		95176	SP-638-BE		94464		
Cook Area	Grill	Plate	Height	Width	Depth	Weight	MJ/hr
3840cm sq	400mm	400mm	1217mm	1527mm	602mm	77kg*	72



1200E Series 5 Burner

Black Enamel Freestanding BBQ with Side Burner Trolley

BMG1251BBE

Cast Iron cook pack		NG Kit	Rotisserie		Cover		
BMG1251BBE		95176	SP-638-BE		94465		
Cook Area	Grill	Plate	Height	Width	Depth	Weight	MJ/hr
4608cm sq	640mm	320mm	1217mm	1697mm	602mm	91kg*	86



1500 Series 3 Burner

Stainless Steel Freestanding BBQ with Side Burner Trolley

BDM1530GA

Cast Iron cook pack		NG Kit	Cover				
BDM1530GA		95176	BACM153				
Cook Area	Grill	Plate	Height	Width	Depth	Weight	MJ/hr
3072cm sq	320mm	320mm	1152mm	1522mm	639mm	63kg*	58



1500 Series 4 Burner

Stainless Steel Freestanding BBQ with Side Burner Trolley

BDM1540GA

Cast Iron cook pack		NG Kit	Cover				
BDM1540GA		95176	BACM154				
Cook Area	Grill	Plate	Height	Width	Depth	Weight	MJ/hr
3840cm sq	400mm	400mm	1152mm	1672mm	639mm	77kg*	72



1500 Series 5 Burner

Stainless Steel Freestanding BBQ with Side Burner Trolley

BDM1550GA

Cast Iron cook pack		NG Kit	Cover				
BDM1550GA		95176	BACM155				
Cook Area	Grill	Plate	Height	Width	Depth	Weight	MJ/hr
4608cm sq	640mm	320mm	1152mm	1842mm	639mm	91kg*	86



1500 Trolley Side Burner



1500 Cooking/ Warming Rack



1500 Fold Down Control Panel/ Shelf

*Approximate weight



1600S Series 3 Burner
Stainless Steel Freestanding BBQ with Side Burner Trolley **BMG1631SBE**

Cast Iron cook pack		NG Kit		Rotisserie		Cover	
BMG1631SBE		95176		SP-638-BE		BACM153	
Cook Area	Grill	Plate	Height	Width	Depth	Weight	MJ/hr
3072cm sq	320mm	320mm	1200mm	1522mm	686mm	63kg*	58



1600S Series 4 Burner
Stainless Steel Freestanding BBQ with Side Burner Trolley **BMG1641SBE**

Cast Iron cook pack		NG Kit		Rotisserie		Cover	
BMG1641SBE		95176		SP-638-BE		BACM154	
Cook Area	Grill	Plate	Height	Width	Depth	Weight	MJ/hr
3840cm sq	400mm	400mm	1200mm	1670mm	686mm	77kg*	72



1600S Series 5 Burner
Stainless Steel Freestanding BBQ with Side Burner Trolley **BMG1651SBE**

Cast Iron cook pack		NG Kit		Rotisserie		Cover	
BMG1651SBE		95176		SP-638-BE		BACM155	
Cook Area	Grill	Plate	Height	Width	Depth	Weight	MJ/hr
4608cm sq	640mm	320mm	1200mm	1840mm	686mm	91kg*	86



1600E Series 3 Burner
Graphite Stainless Steel Freestanding BBQ with Side Burner Trolley **BMG1631BBE**

Cast Iron cook pack		NG Kit		Rotisserie		Cover	
BMG1631BBE		95176		SP-638-BE		BACM153	
Cook Area	Grill	Plate	Height	Width	Depth	Weight	MJ/hr
3072cm sq	320mm	320mm	1200mm	1522mm	686mm	63kg*	58



1600E Series 4 Burner
Graphite Stainless Steel Freestanding BBQ with Side Burner Trolley **BMG1641BBE**

Cast Iron cook pack		NG Kit		Rotisserie		Cover	
BMG1641BBE		95176		SP-638-BE		BACM154	
Cook Area	Grill	Plate	Height	Width	Depth	Weight	MJ/hr
3840cm sq	400mm	400mm	1200mm	1670mm	686mm	77kg*	72



1600E Series 5 Burner
Graphite Stainless Steel Freestanding BBQ with Side Burner Trolley **BMG1651BBE**

Cast Iron cook pack		NG Kit		Rotisserie		Cover	
BMG1651BBE		95176		SP-638-BE		BACM155	
Cook Area	Grill	Plate	Height	Width	Depth	Weight	MJ/hr
4608cm sq	640mm	320mm	1200mm	1840mm	686mm	91kg*	86



7000 Series Classic 5 Burner
Stainless Steel Freestanding BBQ with Side Burner Trolley **BMG7650SAEU**

Cast Iron cook pack		NG Kit		Rotisserie		Cover	
BMG7650SAEU		95182		SP-638-BE		BACM155	
Cook Area	Grill	Plate	Height	Width	Depth	Weight	MJ/hr
4480cm sq	270mm x2	380mm	1284mm	1758mm	708mm	128kg*	108



7000 Series Premium 5 Burner
Stainless Steel Freestanding BBQ with Side Burner Trolley **BMF7655SAEU**

Cast Iron cook pack		NG Kit		Rotisserie		Cover	
BMF7655SAEU		95182		SP-638-BE		BACM155	
Cook Area	Grill	Plate	Height	Width	Depth	Weight	MJ/hr
4480cm sq	270mm x2	380mm	1284mm	1758mm	708mm	128kg*	119



Clubman Stainless Steel
Freestanding BBQ **16440**

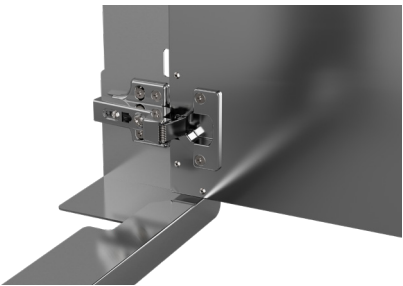
Stainless Steel cook top					
5mm					
Cook Area	Height	Width	Depth	Weight	MJ/hr
4784cm sq	830mm	920mm	520mm	65kg*	72



Clubman Mild Steel
Freestanding BBQ **16640**

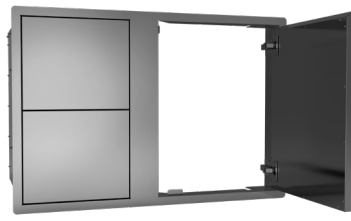
Mild Steel cook top					
5mm					
Cook Area	Height	Width	Depth	Weight	MJ/hr
4784cm sq	830mm	920mm	520mm	65kg*	72

Our impressive modular outdoor kitchen range of built-in components will help you create an outdoor haven for your home. Because it's those little extras that help make something very special. The built-in components have a sleek, slimline and luxurious look to them and are manufactured from 304 grade stainless steel and are very durable. They have a push to close/ open doors with a strong magnetic catch, integrated hinges that are positioned on the inside for a discreet look and the doors hold open by themselves so there is no need for propping them open. To add to the modernised look and feel, all doors are soft close with wide opening door hinges for easy access and have easy glide telescopic drawer rails. These are perfect for adding that extra detail to your outdoor kitchen whilst having functionality.



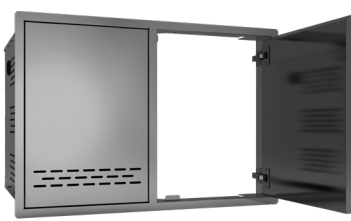
SINGLE DOOR
BOC2040SA

Product – H 546mm / W 431mm / D 112mm
Cut-Out – H 520mm / W 400mm / D 115mm



SINGLE DOOR + DOUBLE DRAWER
BOC2050SA

Product – H 546mm / W 809mm / D 520mm
Cut-Out – H 520mm / W 790mm / D 530mm



SINGLE DOOR + GAS TANK DRAWER
BOC2060SA

Product – H 546mm / W 809mm / D 520mm
Cut-Out – H 520mm / W 790mm / D 530mm



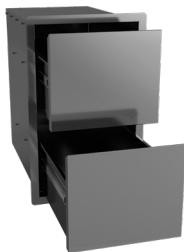
DOUBLE DOOR
BOC2070SA

Product – H 546mm / W 812mm / D 113mm
Cut-Out – H 520mm / W 790mm / D 115mm



GAS TANK DRAWER
BOC2080SA

Product – H 678mm / W 401mm / D 520mm
Cut-Out – H 650mm / W 380mm / D 530mm



DOUBLE DRAWER
BOC2090SA

Product – H 546mm / W 343mm / D 520mm
Cut-Out – H 520mm / W 325mm / D 530mm

*Built-in components may differ from image shown due to regional and specification variance.



Built-in double drawer BOC2090SA, single door + gas tank drawer BOC2060SA & single door BOC2040SA.

The right accessories can make all the difference to your barbecue experience. So when you choose our high quality accessories for your BeefEater barbecue, you'll enjoy easy, effortless entertaining every time.



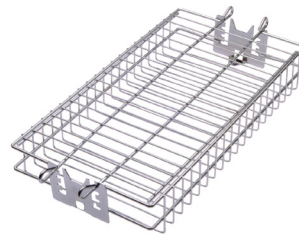
BAKING DISH
92975

- Black enamel finish deep baking dish.
- Perfect for roasting and baking in the BeefEater BBQ's.
- L 420mm x W 320mm x H 50mm



ROAST RACK
92965

- Stainless steel roasting rack.
- For use with the baking dish, allowing easy use for roasting poultry and meats.
- L 410mm x W 250mm x H 75mm



ROTISSERIE SPIT BASKET
94835

- Stainless steel rotisserie spit basket.
- For use with the rotisseries and are perfect for cooking any food on rotation.
- L 410mm x W 200mm x H 60mm



UNIVERSAL ROTISSEIRIE KIT
SP-638-BE-(UK/EU)

- Suitable for 3 / 4 / 5 bnr BBQ's in the 1100 / 1200 / 1600 / 3000E & 7000 series only.
- Available with a UK or EU plug.

*Accessories may differ from image shown due to regional and specification variance.



CLEANING BRUSH

BTC001

H305 x W170 x D20 (mm)

- Designed with durable & gentle brass bristles for effective BBQ cleaning.
- Versatile handling with comfortable heat-resistant handle.
- Versatile design for wide reach & deep clean.
- Hang with ease with a convenient hanging hole.



FORK

BTC002

H430 x W43 x D30 (mm)

- Precise grilling with sharp tapered tines.
- Durable stainless steel construction.
- Versatile handling with comfortable heat-resistant handle.
- Dishwasher safe for ease of maintenance.
- Hang with ease with a convenient hanging hole.



PROFESSIONAL BBQ TONGS

BTC003

H430 x W40 x D45 (mm)

- Secure grip for control & precision.
- Sturdy construction from stainless steel with heavy duty handle.
- Multi-purpose for a range of barbecuing jobs.
- Dishwasher safe for ease of maintenance.
- Hang with ease with a convenient hanging hole.



PROFESSIONAL BBQ SPATULA

BTC004

H441 x W99 x D43 (mm)

- Wide & flexible blade for easy flipping & turning.
- Sturdy construction & versatile handling with comfortable heat-resistant handle.
- Dishwasher safe for ease of maintenance.
- Hang with ease with a convenient hanging hole.



FISH TURNER

BTC005

H364 x W75 x D90 (mm)

- Designed to gently lift & turn delicate fish fillets.
- Thin wide blade ensures precise control.
- Versatile handling with comfortable heat-resistant handle.
- Dishwasher safe for ease of maintenance.
- Hang with ease with a convenient hanging hole.



BASTING BRUSH

BTC008

H338 x W45 x D20 (mm)

- Even & precise basting.
- Heat-resistant & durable stainless steel.
- Versatile handling with comfortable heat-resistant handle.
- Easy to clean & dishwasher safe.
- Hang with ease with a convenient hanging hole.



SMOKER & STEAMER BOX

BTC006

H231 x W104 x D14 (mm)

- Enhance smoky flavour.
- Versatile compatibility to turn any BBQ into a smoker.
- Constructed from durable stainless steel.
- Easy to use & dishwasher safe to clean.



3PC PIZZA SET

BTPO01

Pizza stand Diameter 421 x 177 x H41 (mm)

- Guided indents for ease of cutting.
- The stone retains & distributes heat evenly allowing versatile cooking options.
- The stone is made from durable cordierite stone, designed to withstand high temperatures & repeated use.
- Easy to clean & dishwasher safe.

*Accessories may differ from image shown due to regional and specification variance.





BURNERS

- ProLine Burner
- Cast Iron Burner
- Cast Stainless Steel Burner
- 7000 Classic Series Cast Stainless Burner
- 7000 Premium Series Cast Stainless Burner

0004008617ex
94701
94735
405584-1706
405584-3124



BUILT-IN BRACKETS, TRIM KITS & HEAT SHIELDS

- 1200 Series Built-In Bracket Set
- 1500 / 1600 Series Built-In Bracket Set
- 3000 Series Built-In Bracket Set
- 3000 Series - 3 Bnr Built-In Trim Kit
- 3000 Series - 4 Bnr Built-In Trim Kit
- 3000 Series - 5 Bnr Built-In Trim Kit
- 7000 Series Built-In Bracket Set
- ProLine Series Built-In Trim Kit - *Suits Roaster & Flat Lid*
- ProLine Series Built-In Trim Kit - *Suits Side Burner*
- Rear Heat Shield - *Suits 1200 / 1500 / 1600 / 3000 / 7000 Series*

BA12HS
BA70HS
BA45HS
23133
23134
23135
BA55HS
BACS100A
BACS101A
BA10RHS



GRILLS

- 1200 / 1500 / 1600 Series Cast Iron Grill - 320mm
- 1200 / 1500 / 1600 Series Cast Iron Grill - 400mm
- 3000 Series Cast Iron 'V' Grill - 160mm
- 3000 Series Cast Iron 'V' Grill - 320mm
- 3000 Series Cast Iron 'V' Grill - 400mm
- 7000 Series Cast Iron Grill to suit 4 Burner Models
- 7000 Series Cast Iron Grill to suit 5 Burner Models
- ProLine Series Griller Pack

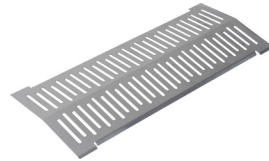
EW01909-5
EW01909-4
93826
93823
93825
405584-1854
405584-2613
BACS102A



PLATES

- 1200 / 1500 / 1600 Series Cast Iron Plate - 320mm
- 1200 / 1500 / 1600 Series Cast Iron Plate - 400mm
- 3000 Series Cast Iron 'V' Plate - 320mm
- 3000 Series Cast Iron 'V' Plate - 400mm
- 3000 Series Cast Iron Plate - 320mm
- 7000 Series Cast Iron Plate

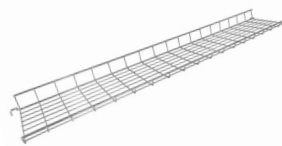
EW01908-5
EW01908-4
93813
93815
94323DLX
405584-1847



VAPORIZERS + REFLECTORS

- 1200 / 1500 Series Vaporizer
- 1600 Series Vaporizer
- 3000E Series Vaporizer
- 3000 Series Reflector Plate
- S3000S / SL4000 Series Anti-Flare Vaporizer
- 7000 Series Vaporizer
- ProLine Panel Heat Distributor

A13256201
EW02014-4
060546
060547
060557
405584-1862
0038006719ex



WARMING RACKS

- 1200 Series Warming Rack - 3 Bnr / 4 Bnr / 5 Bnr
- 1500 Series Warming Rack - 3 Bnr / 4 Bnr / 5 Bnr
- 1600 Series Warming Rack - 3 Bnr / 4 Bnr / 5 Bnr
- 3000 Series Warming Rack - 3 Bnr / 4 Bnr / 5 Bnr
- 7000 Series Warming Rack - 4 Bnr
- 7000 Series Warming Rack - 5 Bnr

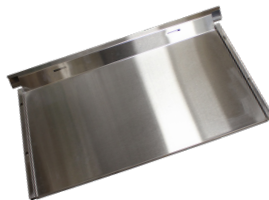
EW01907-3/4/5
A1666040-2/1/3
EW02007-3/4/5
060614-3/4/5
405584-1649
405584-2571



GAS FITTINGS

- 1200 / 1500 / 1600 Series NG Conversion Kit
- 3000E Series NG Conversion Kit
- UK Hose & Regulator Assembly - *Suits 1200 / 1500 / 1600 / 3000 & Clubman's*
- UK Hose & Regulator Assembly - *Suits 7000 & ProLine Series*

95176
95174
96581
96582



GREASE MANAGEMENT

- 1200 Series Drip Tray - 3 Bnr / 4 Bnr / 5 Bnr
- 1500 Series Drip Tray - 3 Bnr / 4 Bnr / 5 Bnr
- 1600 Series Stainless Drip Tray - 3 Bnr / 4 Bnr / 5 Bnr
- 1600 Series Dark Drip Tray - 3 Bnr / 4 Bnr / 5 Bnr
- 3000 Series Grease Tray - 3 Bnr / 4 Bnr / 5 Bnr
- 7000 Series Grease Tray - 4 Bnr
- 7000 Series Grease Tray - 5 Bnr
- Clubman Grease Cup & Holder
- ProLine Grease Collector Assembly

EW01918-3/4/5
A1671420-2/1/3
EW02024-3/4/5
EW02024-31/41/51
19010-1/3/6
405584-2118
405584-2621
476014
A01840401ex

CONTACT US FOR MORE INFORMATION

We still hold spares and accessories for discontinued products, please scan the QR code to view the items on our website, or if you can't find what you are looking for then please get in touch.



*Accessories may differ from image shown due to regional and specification variance.



FREESTANDING BBQ ALL WEATHER COVERS

94463 – Premium

3 Burner Cover 1200/3000

94464 – Premium

4 Burner Cover 1200/3000

94465 – Premium

5 Burner Cover 1200/3000

BACM153 – Premium

3 Burner Cover 1500/1600

BACM154 – Premium

4 Burner Cover 1500/1600/7000

BACM155 – Premium

5 Burner Cover 1500/1600/7000



BUILT-IN BBQ ALL WEATHER COVERS

94493 – Premium

3 Burner Cover 1200/3000

94494 – Premium

4 Burner Cover 1200/3000

94495 – Premium

5 Burner Cover 1200/3000

BACB153 – Premium

3 Burner Cover 1500/1600

BACB154 – Premium

4 Burner Cover 1500/1600

BACB155 – Premium

5 Burner Cover 1500/1600

BACB704 – Premium

4 Burner Cover 7000

BACB705 – Premium

5 Burner Cover 7000



BUILT-IN BBQ ALL WEATHER COVERS

BACS201A

ProLine® Flat lid Cover

BACS200A

ProLine® Roasting Hood Cover

BACS202A

ProLine® Side Burner Cover



ProLine® built-in roasting hood cover.

SHOWROOMS

LOCATED ACROSS EUROPE



You will find our products displayed and promoted in many dealer showrooms and specialist online retailers across Europe. Details can be found on our website on the 'where to buy' page.

We have a showroom based in Surrey UK which features our most popular products that are a perfect blend of beauty and functionality combined. With a wide range of options to choose from, we have something to suit every taste and style. From the very popular Cabinex DIY solution to a fully bespoke kitchen. Whether you're hosting a garden barbecue or enjoying a cosy family dinner under the stars, our outdoor kitchens are designed to enhance your outdoor living space. Visit us today (by appointment only) and explore our collection to find the perfect outdoor kitchen or barbecue appliance for your home.



DESIGN SERVICE

IN-HOUSE



As market leading appliances where power and style meet, BeefEater BBQ's are known for being the perfect addition to any outdoor area whether it is being built-in or as a stand alone and are incorporated to many different outdoor kitchens and spaces which are beautifully displayed. We have a small design team who can offer an expert design service and produce 3D visualisations. They have the knowledge and understanding to create and tailor your outdoor space that will exceed your expectations.

Whether you are looking for a ready-to-assemble option or a custom-made outdoor kitchen, we ensure that our products provide a seamless combination of practicality and design for the perfect outdoor cooking experience that creates a wonderful ambience that is an ideal space for many different food and entertainment activities.



OUTDOOR KITCHENS OF DISTINCTION

Cabinex™ outdoor kitchens are a quality DIY solution that seamlessly blends technology, design, and versatility. They are a modern, sleek cooking and dining area with waterproof and durable surfaces, clever storage solutions, and combined with market leading BeefEater BBQ appliances, Cabinex™ really is perfect for entertainment and has everything you need to create an amazing outdoor cooking oasis. With a little creativity and ingenuity, you can create an outdoor kitchen that's truly one-of-a-kind.

These kitchens offer a cabinetry system that is a pioneer in its class. PVC panels are used together with Cabinex™ patented aluminium framing system, to form a rigid and robust cabinetry solution, and the cabinets are supported by a 10-year limited warranty.

CLASSIC SERIES	88
PREMIUM SERIES	90
PRO SERIES	92

BRANDS WE PARTNER WITH...



PERFECT COOKING ENVIRONMENT

The classic outdoor kitchen will change the way you entertain. Entertaining is so easy with everything that you need at your fingertips, meaning you'll enjoy those moments with family and friends more often.

EVERYTHING YOU NEED & MORE

The classic series Cabinex™ BBQ kitchen doors are finished in an anthracite colour with a black worktop and waterfall ends and features a sink module available in black stainless steel 300mm x 450mm, your choice of BeefEater BBQ that suits, a storage module, and an 108L outdoor bar fridge.

MARKET LEADING BEEFEATER BBQ'S

The kitchen can be fitted with either the BeefEater 1500, 1600, 3000E or the 7000 series along with the 6 burner ProLine grill, with a roasting hood or flat lid.

BEST COOKING ENVIRONMENT

When it comes to outdoor cooking, creating the finest environment is key. These BeefEater appliances and Cabinex™ kitchens combined are perfect for giving you the power, style and barbecue conditions that you will need to prep, cook and enjoy delicious food and is also a great way to create precious memories with family and friends.

DIY & EASY TO INSTALL

Cabinex™ kitchens are made up of different modular units and are easy to build and install yourself making this the perfect solution for your outdoor space and with the adjustable feet you are able to simply level the units making sure that any uneven surfaces are not affecting the kitchen and function.



EXQUISITE OUTDOOR COOKING

The premium outdoor kitchen is the outdoor entertainer's dream machine. Big enough to handle large outdoor gatherings, grilling becomes a sheer pleasure with ample room to cook up a feast, or perfect for a small gathering or mid week family dinners.

PLENTY OF SPACE TO COOK

Plenty of space for you to prepare, cook and enjoy your food. The large worktop is waterproof, UV and scratch resistant so are designed to withstand harsh weather conditions. Quality materials throughout giving you the assurance that your kitchen will be suitable to entertain and cook for many years to come.

ULTIMATE BBQ EXPERIENCE

The premium series has all the regular features as the classic series, whilst also including a sliding drawer unit, larger sized sinks and extra counter-top workspace.

For the ultimate experience why not combine with the BeefEater 7000P built-in BBQ, which features a back burner, LED lighting on the control knobs as well as the hood and flame failure.

EASY TO UNPACK & INSTALL

All the modules are delivered in a flat pack form for easy transport and assembly. Full installation service available upon request.

STORING ALL YOUR ESSENTIALS

These outdoor kitchens give you plenty of storage, but the addition of the drawers in the premium pack gives you even more accessible storage making your tools and condiments easy to access whilst keeping everything clean and dry when not in use.



CREATIVITY IN YOUR KITCHEN

Explore and create the outdoor kitchen of your dreams with the Cabinex™ Pro modules for a special and exclusive outdoor kitchen that's tailored to your own style. Built specifically to your desired specifications, whether you're looking for a traditional barbecue setup or a more modern, contemporary design then there is something for you in this range.

The new Cabinex™ Pro range includes all modules from both the classic and premium series with the addition of a corner unit and a Kamado unit. With this range and flexibility, you will have an outdoor kitchen that will broaden your cooking and dining experiences. There are also new colours for the cabinet doors, and drawers available. The new colours include eclipse black, porcelain black, rustic iron bark, light grey and a golden oak.

CONTACT US FOR MORE INFORMATION

If you are interested in finding out more about the PRO range and if we can help with your kitchen design then please use the contact details on page 97 or scan the QR code to get in touch.



PROLINE® ROASTING HOOD & QUAD SIDE BURNER

This is a beautifully designed and crafted outdoor kitchen featuring the BeefEater ProLine® Roaster 6 burner built-in barbecue and the powerful ProLine® quad side burner.

Situated in this gorgeous outdoor area, this kitchen really is an attribute and perfectly designed to suit. Having the ProLine® series means a variety of different foods can be cooked and will broaden your cooking experience therefore treating your friends and family to an exceptional barbecue feast that they won't forget. Spectacular views adds to this outdoor living space which can be enjoyed any day.



NOTES

USEFUL NUMBERS / CONTACTS



<u>Registered Address</u>	<u>Postal Address</u>	<u>Showroom / Spares Warehouse</u>
M Richards Ltd. (t/a BeefEater Europe) LPM House Cheddar Business Park Wedmore Road Cheddar BS27 3EB United Kingdom	M Richards Ltd. (t/a BeefEater Europe) PO Box 1238 Cheddar BS27 9AH United Kingdom	M Richards Ltd. (t/a BeefEater Europe) Unit 9 LDL Business Centre Station Road West Ash Vale GU12 5RT United Kingdom
<u>Accounts Department</u>		<u>Sales Department</u>
Tel: +44 (0) 1934 743322 (ext 201) Email: julie-anne@beefeater europe.co.uk		Tel: +44 (0) 1934 743322 Email: sales@beefeater europe.co.uk
<u>Showroom by Appointment</u>		<u>Parts & Service Department</u>
Tel: +44 (0) 7581 026917 Email: gordon@beefeater europe.co.uk		Tel: +44 (0) 7961 143790 Email: service@beefeater europe.co.uk





2024



beefeaterbbqeuropa.co.uk



[@beefeaterbbq.europa](https://www.instagram.com/beefeaterbbq.europa)



[Beefeaterbbqeuropa](https://www.facebook.com/Beefeaterbbqeuropa)

LIFE TASTES BETTER OUTDOORS

For more information on all BeefEater products, or for dimension and installation information, call into your retailer, phone or email our customer care team or visit our website.

BeefEater Europe

PO Box 1238

Cheddar

BS27 9AH

United Kingdom

Phone +44 (0) 1934 743322

Email sales@beefeateruropa.co.uk